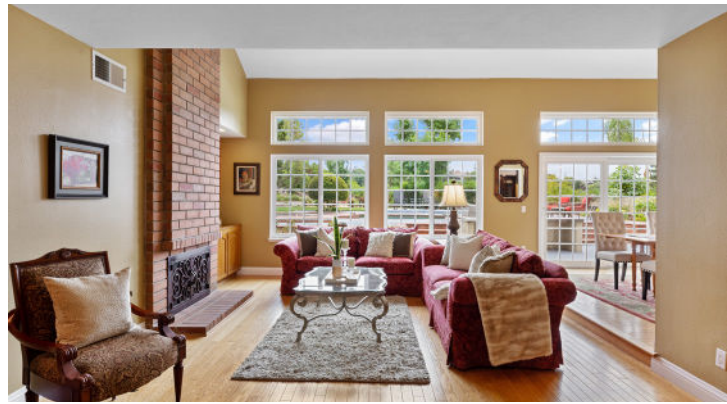




**25662 PINTO COURT**  
- LAGUNA HILLS -

**PRESENTED BY THE BRAD FELDMAN GROUP**

**BRADFELDMAN**  
GROUP



## 25662 PINTO COURT | LISTED FOR \$1,399,000

3-BR + OFFICE | 2.5-BA | APPROX. 2,698 SF | 28,414 SF LOT

Nestled on a cul-de-sac in south Laguna Hills, this charming home boasts bright open living spaces, four comfortable bedrooms, a luxurious kitchen, and a generous yard. Enviably located on roughly two-thirds of an acre, enjoy easy access to nearby Cabot Park, the 5 fwy, Costco, restaurants, and The Shops at Mission Viejo. Backed by mature trees leading to an equestrian trail, the home is enclosed by a lush lawn and a wide driveway to the three-car garage. Just inside, the soaring two-story foyer reveals a regal staircase and an open-plan living and dining space. The gourmet kitchen features a beautiful tile backsplash, stone countertops with bar seating, white cabinets and matching paneled fridge, and stainless steel appliances including a Dacor convection microwave. This open layout blends the kitchen and family room, where a cozy brick fireplace catches the eye and glass French doors open to the patio. Enjoy four bedrooms or three plus an office, including a gorgeous master suite with vaulted ceilings, bright windows, and a walk-in closet, dual vanities, and separate tub and shower in the en-suite bath. In the backyard, a pergola offers shade over the patio where you'll love to grill and entertain. There's plenty of lawn to roam and play, and even room for a pool! Bonus upgrades include triple-glazed Pella windows and ePipe-coated plumbing with transferable warranty. There's so much to love at this beautiful home in an excellent Laguna Hills location. Don't miss it!



**JACCI PEARCE** | Realtor®  
949.529.6924  
Jacci.Pearce@elliman.com  
DRE#: 01910578

**BRAD FELDMAN** | Team Leader  
949.678.5198  
Brad.Feldman@elliman.com  
DRE#: 01437125

**TRENT MASON** | Realtor®  
949.322.6977  
Trent.Mason@elliman.com  
DRE#: 02018104

**BRADFELDMAN**  
GROUP

 **Douglas Elliman**